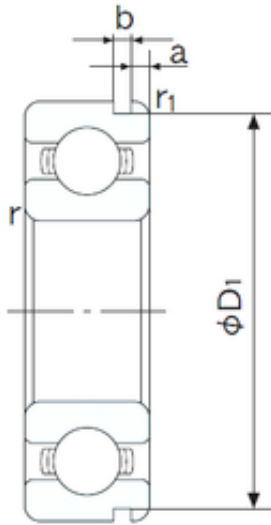




BEARINGS IMPORTED AND EXPORTED CO.,LTD.



15 mm x 28 mm x 7 mm NACHI 6902N deep groove ball bearings

Bearing No. 6902N

6902N Bearing 2D drawings and 3D CAD models

Size	15x28x7 mm
Bore Diameter	15 mm
Outer Diameter	28 mm
Width	7 mm
d	15 mm
D	28 mm
B	7 mm
C	7 mm
a	1.3 mm
b	0.95 mm
r min.	0.3 mm
r1 min.	0.3 mm
D1	26.7 mm
Weight	0.017 Kg
Basic dynamic load rating (C)	4,3 kN
Basic static load rating (C0)	2,25 kN
(Grease) Lubrication Speed	26000 r/min
Bore Type	Cylindrical Bore
Enclosure	Open
Configuration	Single Row
Bore Size	15 mm
Outside Diameter	28 mm
Width	7 mm
Fillet Radius/Chamfer	0.3 mm
r1	0.3 mm



BEARINGS IMPORTED AND EXPORTED CO.,LTD.

Groove Width	1 mm
Groove Diameter	26.7 mm
a (max)	1.3 mm
Dynamic Load Rating	4,300 N
Static Load Rating	2,250 N
Limiting Speed - Grease	26,000 rpm
Limiting Speed - Oil	31,000 rpm
Factor fo	14.3
Radial Clearance	0.003 to 0.018 mm
da (min)	17 mm
Da (max)	26 mm
Dx (min)	31.5 mm
ra (max)	0.3 mm
Cy (max)	1.8 mm